

NAME: _____ PHONE#: _____ FAX#: _____ TAG / JOB: _____

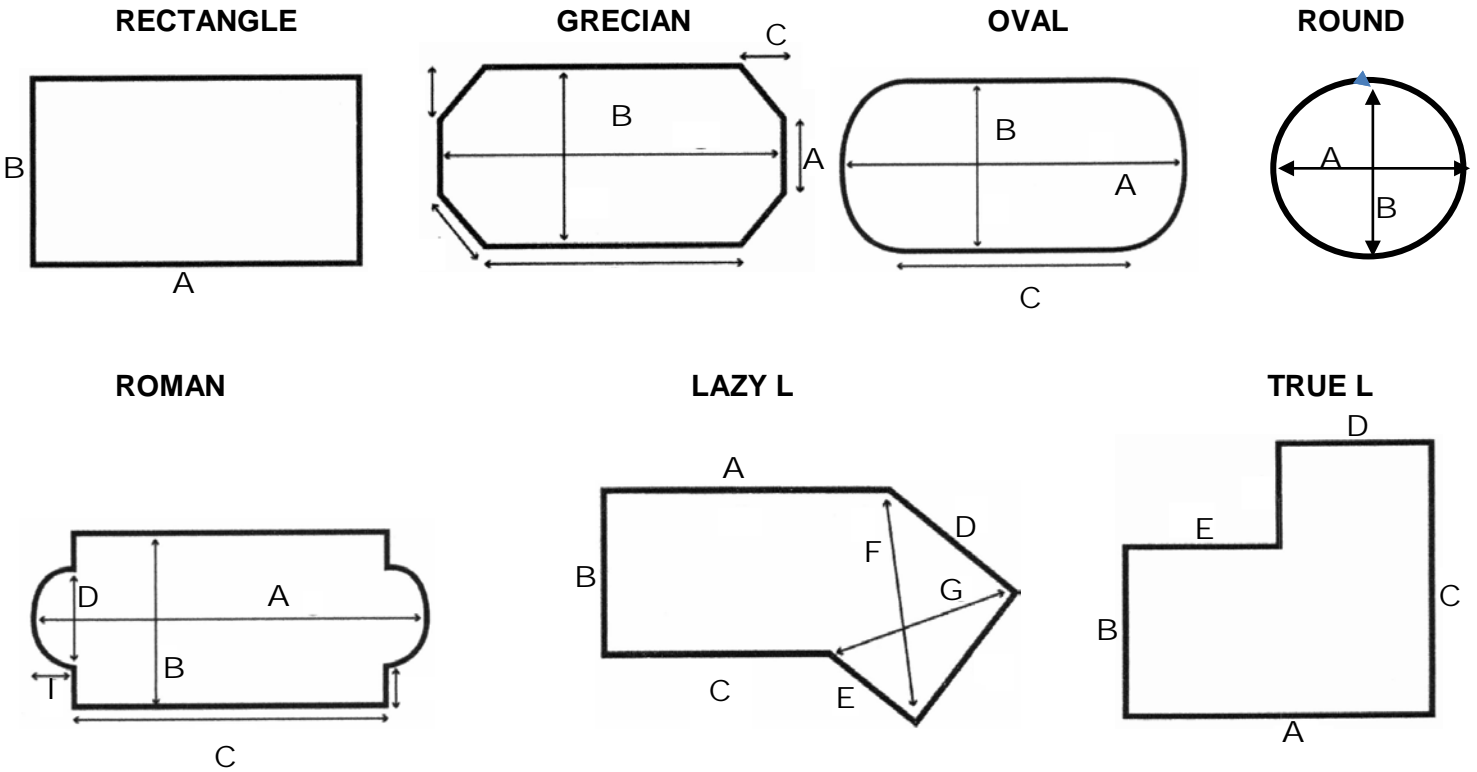
CONTACT: _____ PURCHASE ORDER #: _____ DATE: _____ QUOTE _____ ORDER _____

POOL SHAPE: _____ GRID: _____ MATERIAL: _____ COLOR: _____

CONCRETE DECK _____ WOOD DECK _____ GARDEN STAKE _____ LAWN PIPE _____

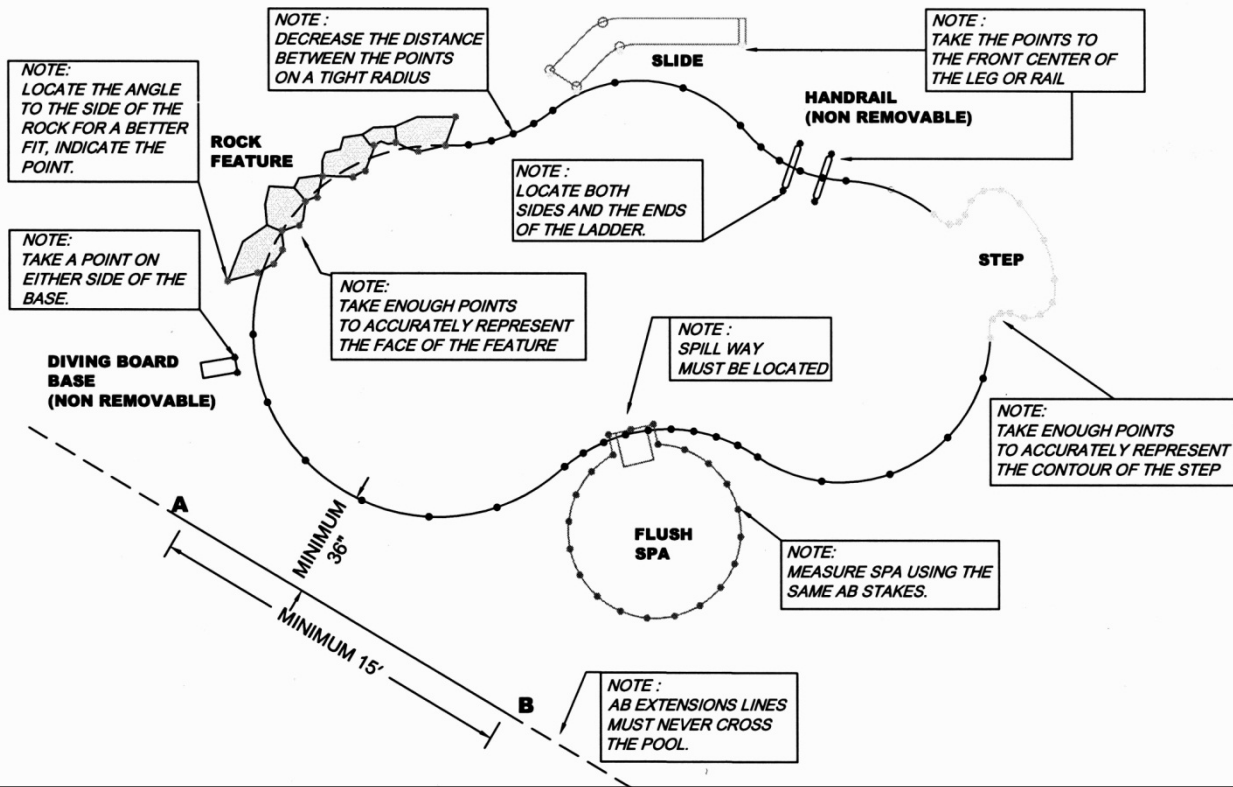
SHIP TO: _____ ADDRESS: _____ STATE: _____ ZIP: _____

PROVIDE DRAWING WITH DIMENSIONS AND STEP LOCATION AND ANY CUTOUT INFORMATION



POOL DIMENSIONS

A B C D E F G I



1. Begin with an accurate freehand sketch indicating the inside of the pool perimeter. Any variation in deck size or type must be referenced in relation to the pool. Also all obstructions (non-removable) must be clearly indicated.
2. Establish two stake positions labeled A and B
Use spikes, rebar or screwdrivers with a minimum distance of 15 feet apart. When choosing a position ensure they are parallel to the centerline and if extended in either direction must not intersect the pool. The stakes must be a minimum of 3 feet back from the pool perimeter. Once the stake position is established, record the measurements (distance between the A and B) and location on the attached measuring form.
3. Attached two 100 foot tape measure one to each of the stake. Be sure to remember which stake is label A and B. Start from a distinctive point (the start of a step or a waterfall). Pull both the tape measures to the point at the same time. Record the measurement for the A tape in the A column on the measuring form and the B measurement in the B column.
4. Continue taking a measurement around the entire perimeter of the pool approximately every 2 feet for the large radius section and 1 foot for tight reverse sections.
5. You can go wider on a straight wall pool but enough points must be given along the wall in the event one point does not work. You must plot the start and the end of a radius corner as well as two points in between. It is also important to locate any angle changes or miter corners on straight wall pool. For example the inside corner on a Lazy L pool.
6. Measure the entire pool as described above. Take enough points along the perimeter to accurately outline the pool. Take points to indicate the overall length and width.
7. Plot all NON REMOVABLE obstructions, as part of the pool or as a separate plot from the same AB location as the pool. If the Stake is moved the measurements are rendered unusable.

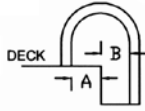
Tips:

When position the stakes, the ideal position is parallel to the centerline, due to landscaping it might not be possible. The stakes can be located anywhere around the pool as long as it does not cross the perimeter of the pool, if extended in either direction. Also try to locate the stakes opposite to any major obstructions such as Water Features or Raised Walls. It is not necessary to mark the coping, unless you feel more comfortable using this method. Pull the tape measure tight and making sure it does not get caught on obstructions. All measurements must be taken at the same elevation. The diagram must be clearly marked with the number to indicate the start and the end of each obstruction. When measuring walls and features a measurement to the side of the feature must also be taken to indicate the angle of cut needed to ensure a proper fit around the feature. When locating obstructions such as rails, slides and bars take the point to the front center of the object. Please also fill out the other required measurements on the Safety Cover Detail Page. Please use a black pen and print clearly when filling out the measuring forms to avoid delays in processing your orders. Please provide photos for any pools with obstructions.

YES NO

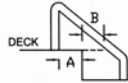
- 1. ARE THERE ANY LADDERS, HANDRAILS OR GRAB RAILS?
PLEASE LOCATE RAILS USING AB POINTS.

LADDER
A – DISTANCE
B – DISTANCE
DIAMETER OF RAIL



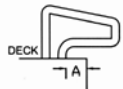
HAND RAILS

A – DISTANCE
B – DISTANCE
DIAMETER OF RAIL

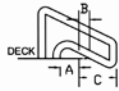


GRAB RAILS ABOVE DECK

A – DISTANCE
DIAMETER OF RAIL



GRAB RAILS BELOW DECK
A – DISTANCE
B – DISTANCE
C – DISTANCE
DIAMETER OF RAIL



- 2. ARE THERE ANY RAISED RAIL SOCKETS?
PLEASE PROVIDE THE FOLLOWING:
A – AN AB DISTANCE TO THE FRONT CENTER OF SOCKET
B – HEIGHT OF THE RAIL SOCKET

- 3. IS THERE A DIVING BOARD BASE?
PLEASE PROVIDE THE FOLLOWING:

IS THE DIVING BASE REMOVABLE?

IF NO –
A – AN AB MEASUREMENT TO EITHER SIDE OF THE BASE.
B – DISTANCE FROM THE EDGE OF POOL TO BASE
C – WIDTH OF DIVING BOARD BASE

- 4. IS THERE A DIVING ROCK?
PHOTO MUST BE PROVIDED.
AN AB MEASUREMENT TO EITHER SIDE AND ALONG THE FACE OF THE DIVE MUST BE PROVIDED.
A – OVERHANG DISTANCE
B - WIDTH OF DIVE ROCK
C – HEIGHT OF DIVE ROCK
CHECK ONE
ANCHORING TO THE FACE OF THE ROCK
UNDER THE DIVE ROCK
ABOVE THE DIVE ROCK (PADDING REQUIRED)

- 5. ARE THERE SLID LEGS?
PLEASE PROVIDE THE FOLLOWING:
IS THERE A DECK FLANGE?
DIAMETER OF FLANGE

SLIDE LEGS
AN AB MEASUREMENT TO THE FRONT CENTER OF EACH OF THE LEGS AND THE LADDER MUST BE PROVIDED.
DIAMETER OF FLANGE

SLIDE LEGS
AN AB MEASUREMENT TO THE FRONT CENTER OF EACH OF THE LEGS AND THE LADDER MUST BE PROVIDED.
A – DISTANCE FROM POOL EDGE
B - DISTANCE FROM POOL EDGE
C - DISTANCE FROM POOL EDGE
D - DISTANCE FROM POOL EDGE

SLIDE LADDER

A - DISTANCE FROM POOL EDGE
B - DISTANCE FROM POOL EDGE

YES NO

- 6. IS THERE A SPA?
PHOTOS MUST BE PROVIDED

SPA AND SPILLWAY MUST BE PLOTTED AB POINTS.

DO YOU NEED A CUTOUT ONLY?

IS THE SPA TO BE COVERED WITH THE SAFETY COVER?
DISTANCE FROM POOL

IS THE SPA FLUSH WITH THE DECK?
DO YOU NEED A SEPARATE COVER?
IS THE SPA RAISED?
IS THERE A SPILLWAY?
CAN THE SIDE OF SPA BE DRILLED INTO?
HEIGHT ABOVE THE DECK

- 7. IS THERE A RAISED WALL OR BEAM?
IS IT STRONG ENOUGH TO SUPPORT A LOADED COVER?
DOES IT REQUIRE A BUMPER?
PHOTOS MUST BE PROVIDED.
A – AB MEASUREMENT MUST BE TAKEN AT START AND THE END OF THE WALL AS WELL AS 1 FOOT INCREMENTS ALONG THE WALL.
B – HEIGHT OF WALL
PLEASE NOTEFOR A RAISED WALL ASSEMBLY, ANCHORS ARE PLACED APPROXIMATELY 12 TO 18 INCHES APART.

- 8. DO YOU NEED PERIMETER PADDING?
REQUIRED FOR ROUGH OR RAISED COPING.

- 9. IS THERE A ROCK FEATURE OR WATERFALL?
IS IT STRONG ENOUGH TO SUPPORT A LOADED COVER?
IS A BUMPER REQUIRED?
PHOTOS REQUIRED

AB MEASUREMENTS MUST BE TAKEN AT THE START AND END OF THE WALL AS WELL AS 1 FOOT INCREMENTS ALONG THE WALL, INCLUDING CRITICAL POINTS WHERE THE SURFACE DIPS IN AND OUT.

IS THE FEATURE FLUSH WITH THE COPING?

DOES THE FEATURE OVERHANG THE POOL?
OVERHANG DISTANCE

IS THE FEATURE SET BACK FROM THE POOL'S EDGE?
DISTANCE FROM POOL'S EDGE

PLEASE NOTEFOR A RAISED WALL ASSEMBLY, ANCHORS ARE PLACED APPROXIMATELY 12 TO 18 INCHES APART.

- 10. IS THE DECK 36" OR GREATER?
IS THE DECK CONCRETE?

- 11. IS THE DECK INTERLOCKED PAVERS?
ARE THE PAVERS CEMENTED IN?

IF NOT CEMENTED INTERLOCK EXTENSIONS ARE REQUIRED

- 12. IS THERE A WOOD DECK AREA?
IS THE WOOD DECK STRUCTURALLY ABLE TO SUPPORT THE WEIGHT OF A LOADED SAFETY COVER?

THE BEGINNING AND THE END OF THE WOOD DECK MUST BE PROVIDED WITH THE AB MEASUREMENTS.

- 13. IS THERE A GARDEN AREA?
CAN YOU GO BEYOND GARDEN AREA?
IF YES SPECIFY LENGTH OF STRAPS.
INTERLOCKING EXTENSIONS ARE REQUIRED IN GARDEN AREA.

AB POINTS MUST BE SUPPLIED TO LOCATE GARDEN.

- 14. ARE THERE ANY VARYING DECK LEVELS?

PROVIDE AB MEASUREMENTS TO INDICATE THE ANGLES AND THE LEVEL CHANGES PLUS CUTBACKS TO POOL. PROVIDE ON A SEPARATE SKETCH A DETAILED LAYOUT OF THE DECK AND THE POOL. PROVIDE ALL THE HEIGHTS OF THE DECK LEVELS.

NAME:

PHONE#:

FAX #:

TAG / JOB

PLEASE SKETCH ACCURATELY THE OUTLINE OF THE POOL, SHOW ALL OBSTRUCTIONS WITHIN 3 FEET OF THE WATERLINE



PLEASE INDICATE THE AB POSITION AND THE DISTANCE BETWEEN THE STAKES

| NO. | A | B | NO. | A | B | NO. | A | B |
|-----|---|---|-----|---|---|-----|---|---|
| 1 | | | 19 | | | 37 | | |
| 2 | | | 20 | | | 38 | | |
| 3 | | | 21 | | | 39 | | |
| 4 | | | 22 | | | 40 | | |
| 5 | | | 23 | | | 41 | | |
| 6 | | | 24 | | | 42 | | |
| 7 | | | 25 | | | 43 | | |
| 8 | | | 26 | | | 44 | | |
| 9 | | | 27 | | | 45 | | |
| 10 | | | 28 | | | 46 | | |
| 11 | | | 29 | | | 47 | | |
| 12 | | | 30 | | | 48 | | |
| 13 | | | 31 | | | 49 | | |
| 14 | | | 32 | | | 50 | | |
| 15 | | | 33 | | | 51 | | |
| 16 | | | 34 | | | 52 | | |
| 17 | | | 35 | | | 53 | | |
| 18 | | | 36 | | | 54 | | |

| IMPORTANT INFORMATION | |
|-------------------------------|------------------------|
| | DISTANCE FROM A TO B |
| | OVERALL LENGTH OF POOL |
| | OVERALL WIDTH OF POOL |
| | OBSTRUCTION 1 |
| TYPE | |
| POINT # | TO POINT # |
| | OBSTRUCTION 2 |
| TYPE | |
| POINT # | TO POINT # |
| | OBSTRUCTION 3 |
| TYPE | |
| POINT # | TO PPRINT # |
| | OBSTRUCTION 4 |
| TYPE | |
| POINT # | TO POINT # |
| POOL TYPE: VINYL GUNITE OTHER | |

| NO. | A | B | NO. | A | B | NO. | A | B |
|-----|---|---|-----|---|---|-----|---|---|
| 55 | | | 87 | | | 119 | | |
| 56 | | | 88 | | | 120 | | |
| 57 | | | 89 | | | 121 | | |
| 58 | | | 90 | | | 122 | | |
| 59 | | | 91 | | | 123 | | |
| 60 | | | 92 | | | 124 | | |
| 61 | | | 93 | | | 125 | | |
| 62 | | | 94 | | | 126 | | |
| 63 | | | 95 | | | 127 | | |
| 64 | | | 96 | | | 128 | | |
| 65 | | | 97 | | | 129 | | |
| 66 | | | 98 | | | 130 | | |
| 67 | | | 99 | | | 131 | | |
| 68 | | | 100 | | | 132 | | |
| 69 | | | 101 | | | 133 | | |
| 70 | | | 102 | | | 134 | | |
| 71 | | | 103 | | | 135 | | |
| 72 | | | 104 | | | 136 | | |
| 73 | | | 105 | | | 137 | | |
| 74 | | | 106 | | | 138 | | |
| 75 | | | 107 | | | 139 | | |
| 76 | | | 108 | | | 140 | | |
| 77 | | | 109 | | | 141 | | |
| 78 | | | 110 | | | 142 | | |
| 79 | | | 111 | | | 143 | | |
| 80 | | | 112 | | | 144 | | |
| 81 | | | 113 | | | 145 | | |
| 82 | | | 114 | | | 146 | | |
| 83 | | | 115 | | | 147 | | |
| 84 | | | 116 | | | 148 | | |
| 85 | | | 117 | | | 149 | | |
| 86 | | | 118 | | | 150 | | |

IMPORTANT INFORMATION

OBSTRUCTION 5
 TYPE
 POINT# TO POINT #

OBSTRUCTION 6
 TYPE
 POINT # TO POINT #

OBSTRUCTION 7
 TYPE
 POINT # TO PPRINT #

OBSTRUCTION 8
 TYPE
 POINT # TO POINT #

ADDITIONAL REQUIREMENTS